

Accessing zLinux through a BASTION

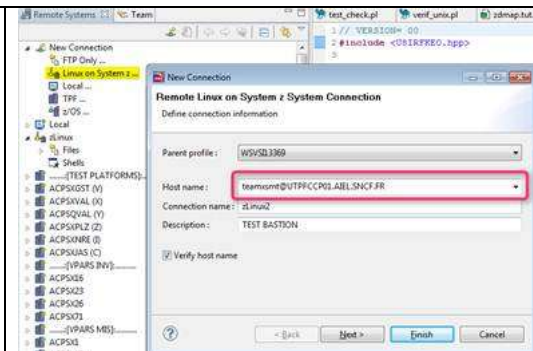
The security of the SNCF network (based on RIVOLI) will be soon improved: the access to zLinux will be protected using a Bastion.

One problem is that the RSE requires a direct access to zLinux. It seems impossible to connect to the RSE using the bastion identification.

Ex: The following screen shots illustrate the attempt to set up the the RSE using a bastion identification

New connexion -> Linux on Système z.

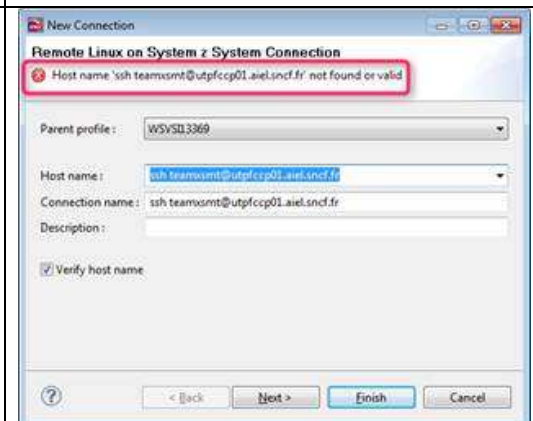
The bastion identification is
teamxsmt@UTPFCCP01.AIEL.SNCF.FR



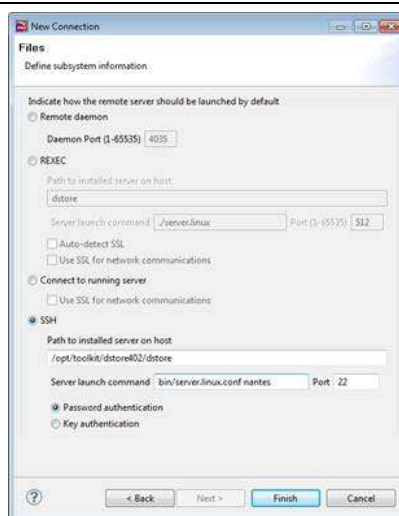
Any value other than the zLinux URL
UTPFCCP01.AIEL.SNCF.FR is rejected

teamxsmt@UTPFCCP01.AIEL.SNCF.FR

ssh teamxsmt@UTPFCCP01.AIEL.SNCF.FR



The connection fails when I skip the initial host name verification



Question:

- 1) Can RSE be improved in order to connect to zLinux through a Bastion ?

An alternative to this issue will be to virtualize TPF_toolkit using ThinApp and run toolkit using a VMware view Client (<http://www.vmware.com>). This solution does not look so much friendly...

- 2) Do you have any experience about running Tool_kit in a VMware environment ?